

TO PLACE YOUR ORDER BY PHONE: 866-681-1577

# Holiday GIFT GUIDE



1a  
Silver Diamond  
Pendant  
1/4 ctw  
**\$499**



1b  
Silver Diamond  
Pendant 1/4 ctw  
**\$499**



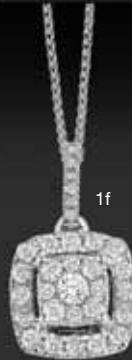
1c  
Gold Diamond Pendant  
1/3 ctw  
**\$699**



1d  
Gold Diamond Ring  
1/3 ctw  
**\$799**



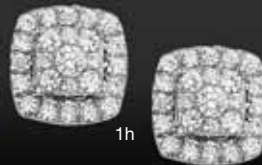
1e  
Gold Diamond Earrings  
3/8 ctw  
**\$999**



1f  
14k Gold Diamond  
Pendant 1/3 ctw  
**\$799**



1g  
14k Gold Diamond Ring  
1/2 ctw  
**\$1299**



1h  
14k Gold Diamond Earrings  
1/2 ctw  
**\$1099**



1k  
Gold Diamond Pendant  
1/7 ctw  
**\$299**



1m  
Gold Diamond Earring  
1/5 ctw  
**\$299**



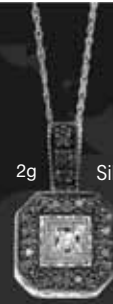
CLICK HERE TO SKIP THE  
LINES AND ORDER ONLINE



2a Silver Diamond Pendant  
1/7 ctw  
**\$129**



2d Silver Diamond Pendant  
1/3 ctw  
**\$399**



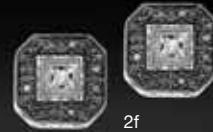
2g Silver Diamond Pendant  
**\$99**



2b Silver Diamond Earrings  
1/4 ctw  
**\$149**



2e Silver Diamond Earrings  
1/3 ctw  
**\$399**



2f Silver Diamond Earrings  
**\$119**



2c Silver Diamond Ring  
1/7 ctw  
**\$129**



2h Silver Diamond Ring  
**\$99**



Please scan to learn more about You're the One



2k



2m



2n

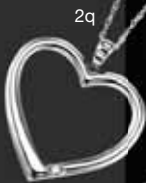


2p

### Your Choice

Silver Diamond Hoops with Black, Cappuccino or Blue Diamonds  
1/4 ctw  
**\$249**

14K Black Diamond Hoops  
1 ctw  
**\$1399**  
2 ctw, \$2399



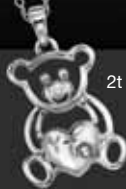
2q



2r



2s



2t



2u



2v



2w

Black Diamond Studs  
1/2 ctw  
**\$149**  
1 ctw, \$299

Your Choice  
Silver Diamond YTO Pendant  
**\$119**

CLICK HERE TO SKIP THE LINES AND ORDER ONLINE

CLICK HERE TO SKIP THE  
LINES AND ORDER ONLINE



Gold Diamond Pendant  
1/3 ctw

**\$699**



Gold Diamond Earring  
3/8 ctw

**\$899**

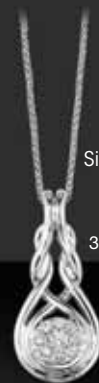


Gold Diamond Ring  
3/8 ctw

**\$999**



Your Choice  
Silver Diamond Heart  
**\$99**



Silver Diamond  
Pendant

**\$119**



Silver Diamond  
Earring

**\$199**



Silver Diamond Ring

**\$119**



Gold Diamond  
Pendant  
1/7 ctw

**\$349**



Gold Diamond Earring  
1/6 ctw

**\$399**



Gold Diamond  
Pendant  
1/5 ctw

**\$399**



Gold Diamond  
Pendant  
1/7 ctw

**\$349**



Gold Diamond Ring  
1/10 ctw

**\$249**



Gold Diamond Pendant  
1/8 ctw

**\$299**



TO PLACE YOUR ORDER BY PHONE: 866-681-1577 <sup>3</sup>

CLICK HERE TO SKIP THE  
LINES AND ORDER ONLINE

Gold Diamond  
Pendant  
1/6 ctw  
**\$399**



4a

Silver and  
Diamond Bracelet  
1/2 ctw  
**\$599**

4d



Gold Diamond  
Ring  
1/10 ctw  
**\$399**

4b



Gold Diamond  
Earring  
1/7 ctw  
**\$499**

4c



Silver and Diamond  
Bracelet  
**\$299**

4e



Silver and  
Diamond Bracelet  
**\$299**

4f



14K Gold Diamond  
Pendant  
1/6 ctw  
**\$399**

1/4 ctw, \$599  
1/2 ctw, \$1099

4k



4m

14K Gold Diamond  
Earring  
1/4 ctw  
**\$499**

1/2 ctw, \$949  
1 ctw, \$1799

4g



Silver Diamond Ring  
1/7 ctw  
**\$199**



4h

Gold Diamond Ring  
**\$99**



4j

Gold Diamond Ring  
**\$199**



4n

14K Gold Dia  
Earring Jackets  
1/7 ctw  
**\$399**

1/5 ctw, \$499  
1/4 ctw, \$599

4p



14K Gold  
Diamond Earring  
2 ctw  
**\$3699**

3 ctw, \$5499



4q

14K Gold  
Diamond Earring  
1/4 ctw  
**\$599**

1/2 ctw, \$999



4r

14K Gold  
Diamond Earring  
1 ctw  
**\$1499**

2 ctw, \$2999



4s

14K Gold  
Diamond Earring  
1 ctw  
**\$1499**

2 ctw, \$3499



CLICK HERE TO SKIP THE LINES AND ORDER ONLINE

Silver Blue Topaz Pendant  
\$99



Gold Sapphire & Diamond Ring  
\$499



Silver Blue Topaz Earring  
\$99



Silver Blue Topaz Ring  
\$99



Gold Sapphire & Diamond Earring  
\$499



Gold Sapphire & Diamond Pendant  
\$499



Silver Amethyst Ring  
\$99



Silver Blue Topaz Ring  
\$99



Gold Sapphire & Diamond Pendant  
\$299



Gold Sapphire & Diamond Earring  
\$199



Silver Amethyst Earring  
\$149



Silver Blue Topaz Earring  
\$149



Gold Sapphire & Diamond Ring  
\$299



**NEW!**  
Your Choice  
Gold Mixables  
\$249

TO PLACE YOUR ORDER BY PHONE: 866-681-1577

CLICK HERE TO SKIP THE  
LINES AND ORDER ONLINE



Please scan to see complete solitaire collection

Your Choice  
Round or  
Princess Cut  
Solitaires



14K Gold Bridal Set 6a  
1/2 ctw  
**\$1199**



14K Gold Engagement Ring 6b  
1/2 ctw  
**\$1299**



14K Gold Diamond Ring 6c  
1/2 Ct  
**\$999**  
3/4 ctw, \$1999  
1 ctw, \$2999



14K Gold Diamond Ring 6d  
1/2 Ct  
**\$999**  
3/4 ctw, \$1999  
1 ctw, \$2999



14K Gold 6e  
5/8 ctw Engagement Ring  
**\$2099**



14K Gold 2 ctw 6g  
Engagement Ring  
**\$8999**



14K Gold Destiny Band 6h  
1/5 ctw  
**\$649**  
3/8 ctw, \$899

Destiny Bands



14K Gold Destiny Band 6j  
1/7 ctw  
**\$599**  
1/4 ctw, \$799



14K Gold 6f  
1-1/10 ctw Engagement  
**\$3499**



14K Gold 3 Stone Plus Ring 6n  
**\$2899**  
1-1/2 ctw, \$3999



14K Gold Destiny Band 6k  
1/4 ctw  
**\$699**  
3/8 ctw, \$899



14K Gold 1/2 ctw 6m  
3 Stone Plus Ring  
**\$1199**  
1 ctw, \$2699  
1-1/2 ctw, \$3899  
2 ctw, \$6599



14K Gold 1/2 ctw 6p  
3 Stone Plus Ring  
**\$1199**  
1 ctw, \$2699  
1-1/2 ctw, \$3899  
2 ctw, \$6599



Please scan to see complete Bridal Bells collection

TO PLACE YOUR ORDER BY PHONE: 866-681-1577

CLICK HERE TO SKIP THE  
LINES AND ORDER ONLINE

14K Gold  
Diamond Pendant  
1/2 ctw  
**\$1199**  
1 ctw, \$2499



14K Gold  
Diamond Earring  
1/2ctw  
**\$1099**  
1 ctw, \$2199



14K Gold Diamond Ring  
1/2 ctw  
**\$1199**



14K Gold Diamond Studs  
1/4 ctw  
**\$149**  
1/2 ctw, \$799  
3/4 ctw, \$1299  
1 ctw, \$1899



14K Gold  
P/Cut Diamond Studs  
1/2 ctw  
**\$999**  
1 ctw, \$2999

14K Gold  
Diamond Band  
1/4 ctw  
**\$649**



14K Gold Diamond Band  
1/2 ctw  
**\$1049**



14K Gold  
Diamond Band  
1 ctw  
**\$1949**

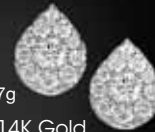


14K Gold  
Diamond Pendant  
1/2 ctw  
**\$1199**  
1 ctw, \$2499



14K Gold  
Diamond Earring  
1/2 ctw  
**\$1099**  
1 ctw, \$2199

14K Gold  
Diamond Pendant  
1/2ctw  
**\$1199**  
1 ctw, \$2499



14K Gold  
Diamond Earring  
1/2 ctw  
**\$1099**  
1 ctw, \$2199



14K Gold Diamond Band  
1/5 ctw  
**\$649**



14K Gold Diamond  
1/4 ctw Band  
**\$599**  
1/2 ctw, \$1049  
3/4 ctw, \$1399



14K Gold  
Diamond Ring  
1/2 ctw  
**\$1299**

TO PLACE YOUR ORDER BY PHONE: 866-681-1577

IMAYA

CLICK HERE TO SKIP THE LINES AND ORDER ONLINE



8a  
Silver Diamond Bangle  
\$399



8c  
Silver Diamond Ring  
\$149



8b  
Silver Diamond Ring  
\$129



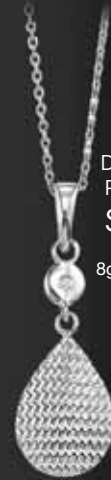
Please scan to see the complete Imaya collection



8f  
Silver Diamond Pendant  
\$149



8d  
Silver Diamond Pendant  
\$149



8g  
Silver Diamond Pendant  
\$129



8h  
Silver Diamond Earring  
\$129



8j  
Silver Diamond Pendant  
\$79



8k  
Silver Diamond Earring  
\$99



8m  
Silver Diamond Pendant  
\$149



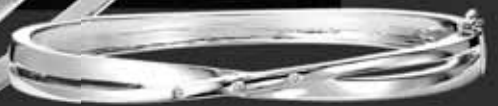
8n  
Silver Diamond Pendant  
\$149



8e  
Silver Diamond Earring  
\$149



8p  
Silver Diamond Bangle  
\$279



8q  
Silver Diamond Bangle  
\$199

CLICK HERE TO SKIP THE  
LINES AND ORDER ONLINE

# KAMELEON™

*Change is Natural.*

KE02 - Wishbone  
Earrings  
**\$75.00**



KR04 -  
CZ Shank Ring  
**\$119.00**



KP27 - Swarovski  
Crystal Pendant  
**\$69.00**



KR34 -  
Ring With CZ  
**\$89.00**

KR01 - Square  
Enamel Ring  
**\$149.00**



KP02 - Square  
Enamel Pendant  
**\$99.00**



KW01B -  
Kameleon Watch  
Available in black  
or white enamel.  
**\$249.00**

KJP501 - Black Pearl &  
Swarovski JewelPop  
**\$49.00**



KJP500 - White Pearl &  
Swarovski JewelPop  
**\$49.00**



KJP433 - Ebony Halo  
JewelPop  
**\$34.00**



KJP167 - Rock Crystal  
**\$29.00**



KJP047 - Ice JewelPop  
**\$34.00**



**Buy two JewelPops and a piece of Jewelry  
and get a free compact!**

*\*Retail prices for jewelry only, not including JewelPops or chain*



TO PLACE YOUR ORDER BY PHONE: 866-681-1577

CLICK HERE TO SKIP THE  
LINES AND ORDER ONLINE

10a

Diamond cut steel  
Cross  
**\$49**

10b  
Titanium Dog Tag  
**\$99**

10c  
Titanium Diamond  
Cross  
**\$59**

14K Gold Vermeil  
and Diamond  
Earring  
**\$149**

14K Gold Vermeil  
and Diamond  
Pendant  
**\$149**  
10e

10d

10f  
14K Gold Vermeil  
and Diamond  
Pendant  
**\$149**



10g  
Steel Band with  
Diamond  
**\$79**



10h  
Titanium Band with  
Diamond  
**\$129**



10q  
Steel with Resin  
Cuff-link  
**\$49**



10j  
14K Gold Vermeil  
and Diamond  
Earring  
**\$149**



10j

Steel  
Bracelet  
**\$29**

10u

Steel Bracelet  
**\$29**

10m

Diamond Steel Bracelet  
1 cwt  
**\$399**

10n

Titanium Bracelet with Diamond  
**\$129**

10p

Steel  
Bracelet  
w/Diamond  
**\$79**

10r

Titanium Bracelet  
**\$99**

10s

Steel Bracelet  
w/Diamond Cut  
**\$79**

10t

10

TO PLACE YOUR ORDER BY PHONE: 866-681-1577

CLICK HERE TO SKIP THE  
LINES AND ORDER ONLINE



Please scan to  
see the complete  
Yangtze River  
collection

11a



Silver F/W  
Pearl Earring  
**\$39**

Silver F/W  
Pearl  
Necklace  
**\$59**  
11b



Silver F/W  
Pearl  
Necklace  
**\$79**  
11c



11d



Silver F/W Pearl  
Pendant  
**\$29**

11e



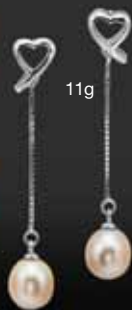
Silver F/W Pearl  
Pendant  
**\$29**

11f



Silver F/W Pearl  
Pendant  
**\$29**

11g



Silver F/W  
Pearl  
Earring  
**\$49**

11h



Silver F/W Pearl  
Earring  
**\$59**

11k



Silver F/W Pearl  
Earring  
**\$39**

11j



Silver F/W Pearl  
Earring  
**\$49**

**YANGTZE RIVER**  
PEARL COMPANY

TO PLACE YOUR ORDER BY PHONE: 866-681-1577



**FERNBAUGH'S**

206 North Michigan St., Plymouth, IN 46563

(574) 936-1577

Mon - Sat 9am-6pm

Open Sunday Dec 11th & 18th 12pm-4pm

www.fernbaughs.com

12 Months Same as Cash

**12a** Silver Diamond Pendant \$119

**12b** Silver Diamond Angel with Heart \$99

**12c** Silver Diamond Ring \$99

**12d** Silver Diamond Earring \$129

**12e** Silver Diamond Pendant \$99

**12f** Silver Diamond Cross \$99

**12g** Silver Diamond Pendant \$99

**12h** Silver Diamond Earring \$149

**12i** 14 KT Gold Vermeil Diamond Pendant \$99

**12j** 14 KT Gold Vermeil Diamond Earring \$99

**12k** 14 KT Gold Vermeil Diamond Earring \$99

**12l** Silver Diamond Earring \$299

**12m** Silver Diamond Earring 1/4 cwt \$299

**12n** Silver Diamond Earring 1/7 cwt \$199

**12o** Silver Diamond Earring 1/2 cwt \$499

**12p** Silver Pearl Earring \$29

**12q** Silver Pearl Stud \$19 (Also available in other colors)

**12r** Silver Diamond Pendant \$199

**12s** Silver Diamond Pendant \$199

**12t** Silver Diamond Ring \$119

**12u** Silver Diamond Pendant 1/10 ctw \$199

**DOORBUSTER SPECIALS**

© 2011. Merchandise enlarged to show detail. Not responsible for printing errors. Prices subject to change. Prior purchases excluded. Colored diamonds may be treated in accordance with best industry practices.

**12** TW - Total diamond weight. 1/5 CT. TW range is .18 to .22 TW. 1/4 CT. TW range is .23 to .28 TW. 1/3 CT. TW range is .29 to .36 TW. 1/2 CT. TW range is .45 to .58 TW. 5/8 CT. TW range is 0.59 to 0.68TW, 3/4 CT. TW range is 0.69 to 0.78TW, 1 CT. TW range is .95 to 1.08 TW. 1 1/2 CT. TW range is 1.40 to 1.60 TW, 2 CT. TW range is 1.95 to 2.08 TW.

**CLICK HERE TO SKIP THE LINES AND ORDER ONLINE**